

RUSTOMJEE SUMMIT BORIVALI (E) MUMBAI



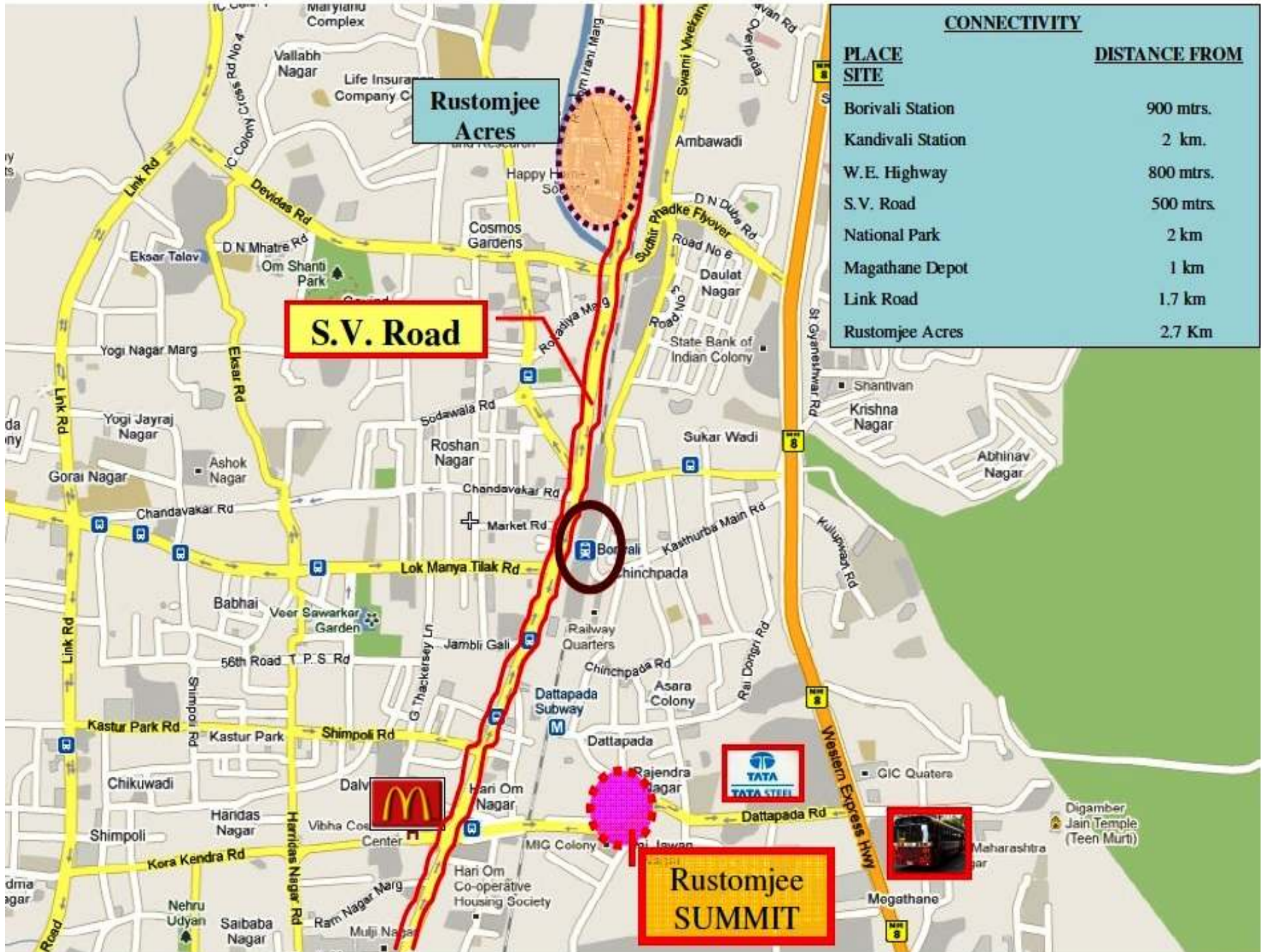
PROJECT OVERVIEW:

Rustomjee Summit is one of the popular Residential Developments in **Borivali**, Mumbai. It is among the ongoing projects of **Rustomjee Group**. The landscape is beautiful with spacious Houses.

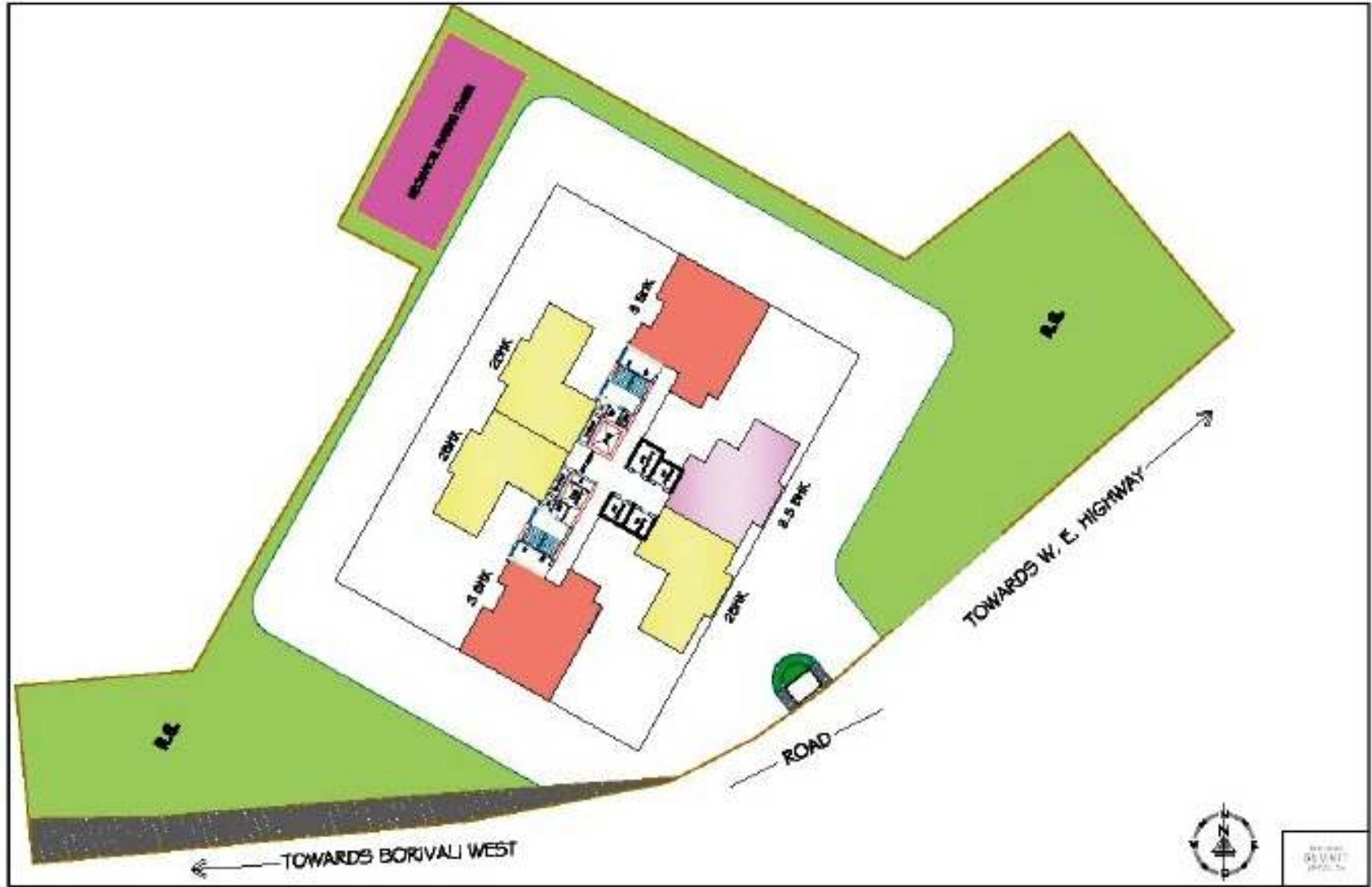
Rustomjee Summit is being presented by Rustomjee group located at **Borivali (E)** Mumbai. Rustomjee offers creatively designed **2, 2.5 and 3 BHK** flats and offers state-of-the-art facilities and amenities to provide a lifestyle that is not only comforting but also truly environment friendly. Rustomjee Summit project is spread over 2.5 acres of land.

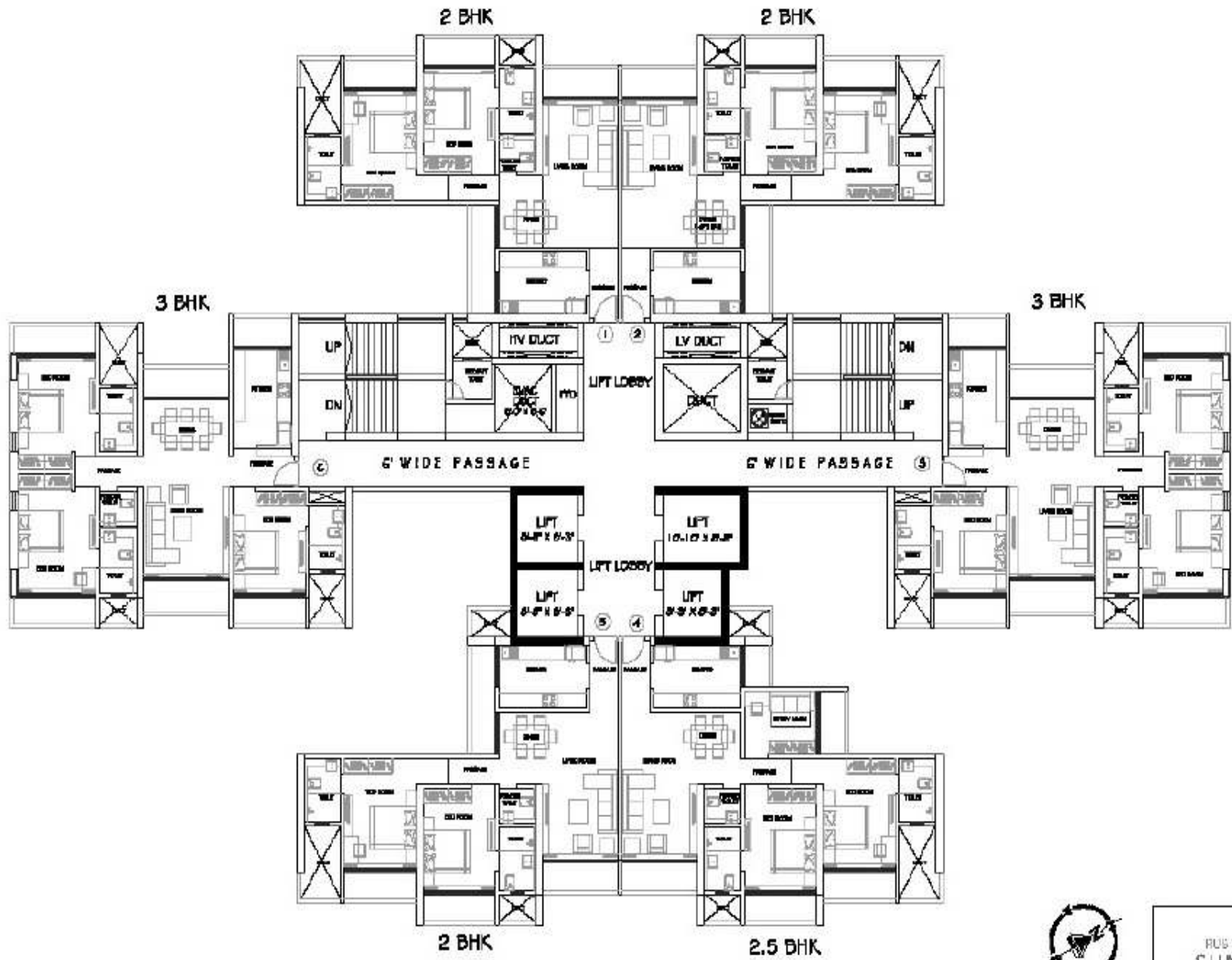
AMENITIES:

- Grand Designer Entrance Lobby High Speed Elevators with Stretcher Elevator
- Kohler or equivalent make Bathroom Sanitary ware
- Granite Platform with S.S. Sink in Kitchen
- Imported Marble Flooring
- Videophone Security System
- Intercom facility / CCTV for Security
- Reflective Glass MPVC Sliding Windows
- Split AC Provision
- Children Play Area
- Indoor Games Area
- Landscape Garden
- Health Club with Gymnasium
- Swimming Pool



LAYOUT PLAN



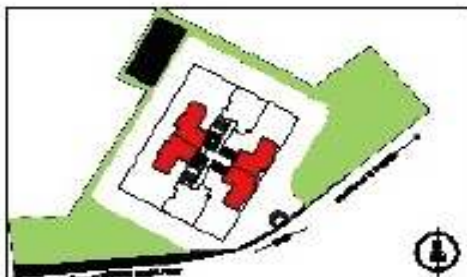


1ST, 2ND, 4TH TO 7TH, 9TH TO 12TH, 14TH TO 17TH AND 19TH TO 22ND FLOOR PLAN



RUS UMJEE
SUMMIT
 BUDHVALE (E)

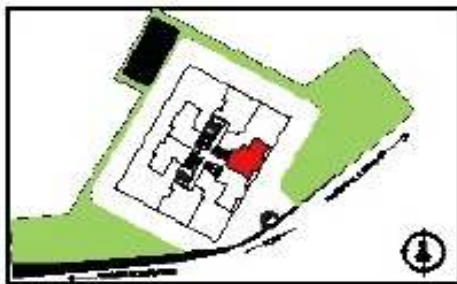
2 BHK



CARPET AREA = 805 SQ.FT.

* DISCLAIMER: SUBJECT TO THE APPROVAL FROM THE AUTHORITIES OR IN THE INTEREST OF THE CONTINUING IMPROVEMENT, THE PROMOTER/S

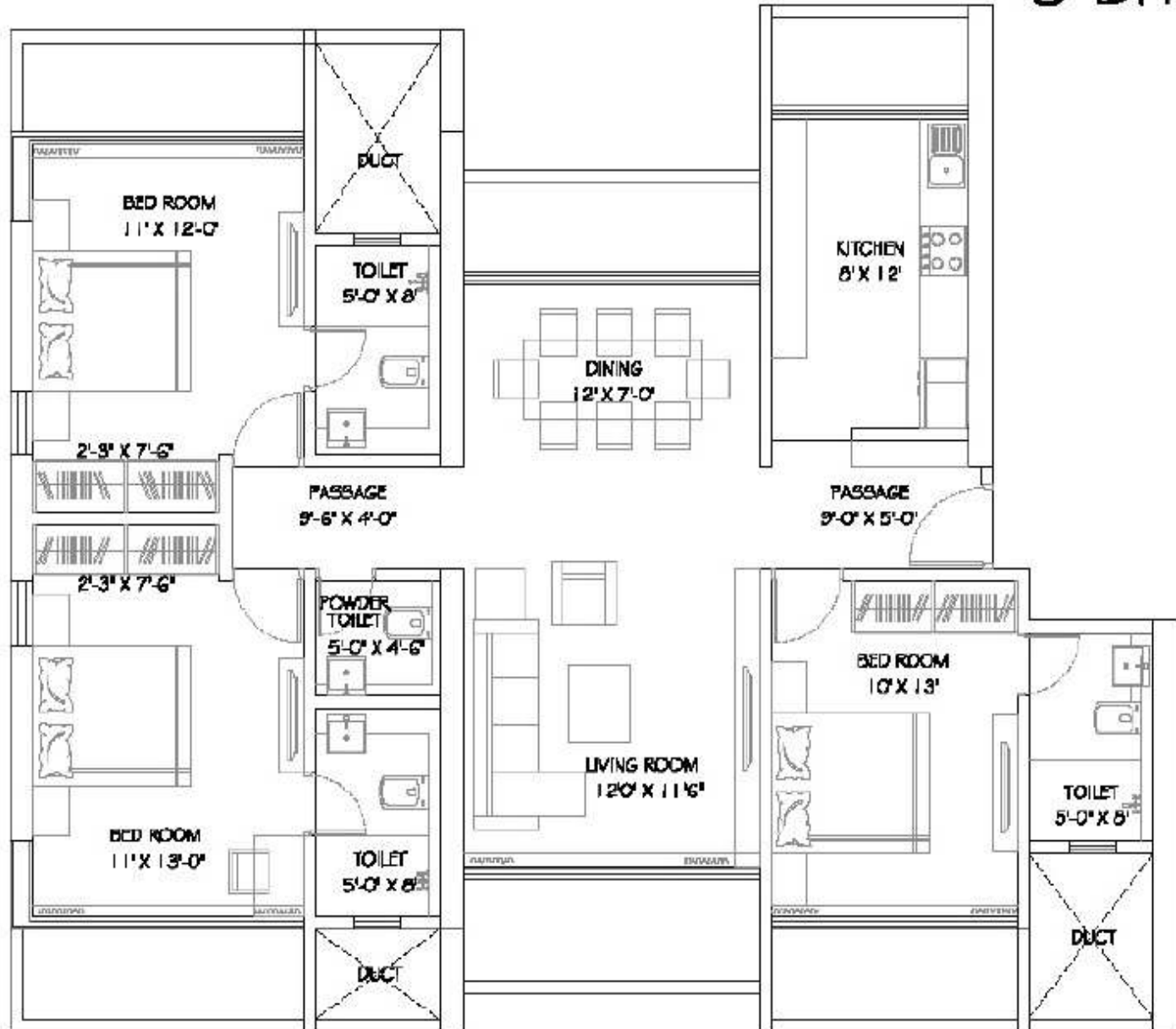
2.5 BHK



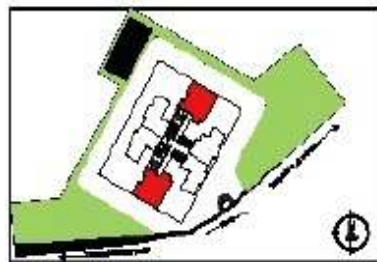
CARPET AREA = 887 SQ.FT.

* DISCLAIMER: SUBJECT TO THE APPROVAL FROM THE AUTHORITIES OR IN THE INTEREST OF THE CONTINUING IMPROVEMENT, THE PROMOTERS

3 BHK



CARPET AREA = 1041 SQ.FT.



* DISCLAIMER: SUBJECT TO THE APPROVAL FROM THE AUTHORITIES OR IN THE INTEREST OF THE CONTINUING IMPROVEMENT, THE PROMOTERS